

LEGEND
 (XXX) REFER TO DWG 820340-2 SHT. 15
 XX = ADDED HAND NOTES FROM ORIGINAL
 RED = CHANGES MADE
 H = REVISED DATE

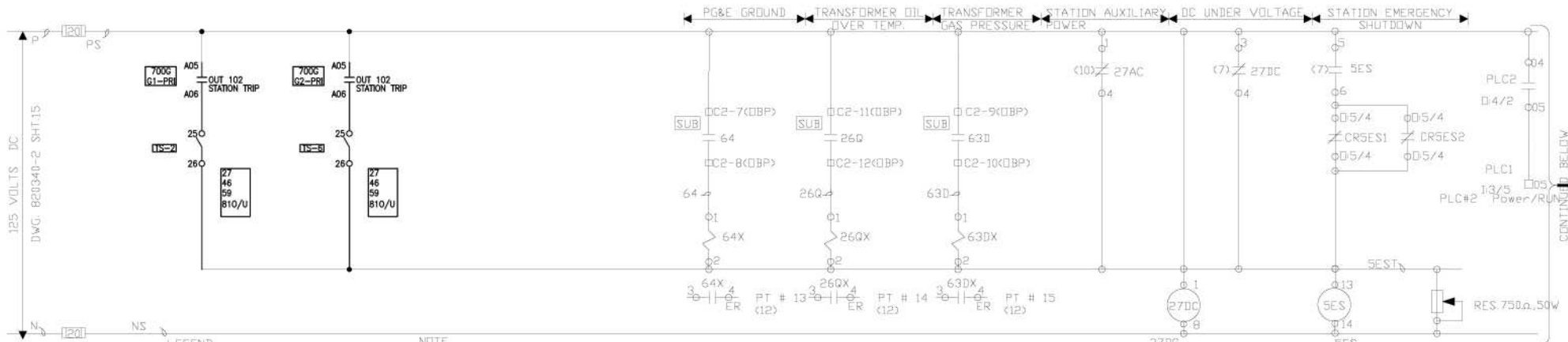
NOTE
 1. UNIT # 1 PROTECTION SHOWN
 UNIT # 2 IDENTICAL
 2. SHALL SYMBOLIZE A TERMINAL BLOCK POINT-AT SWITCH
 GEAR

GENERAL NOTES:

- 1. ONLY GENERATOR #1 SHOWN, GENERATOR #2 SIMILAR

PRELIMINARY DRAWING NOT FOR CONSTRUCTION			
R.W. MATTHEWS DAM Lower West Side Road Mad River, CA	DATE	05/18/18	REV. NO. / DATE
	DESIGNED BY	R.W.	xx/xx/xxxx
SCHEMATIC DIAGRAM GENERATOR PROTECTION	DATE	6/21/2018	REV. NO. / DATE
	PROJECT NO.	1028255	xx/xx/xxxx
	DATE	02	REV. NO. / DATE
			xx/xx/xxxx

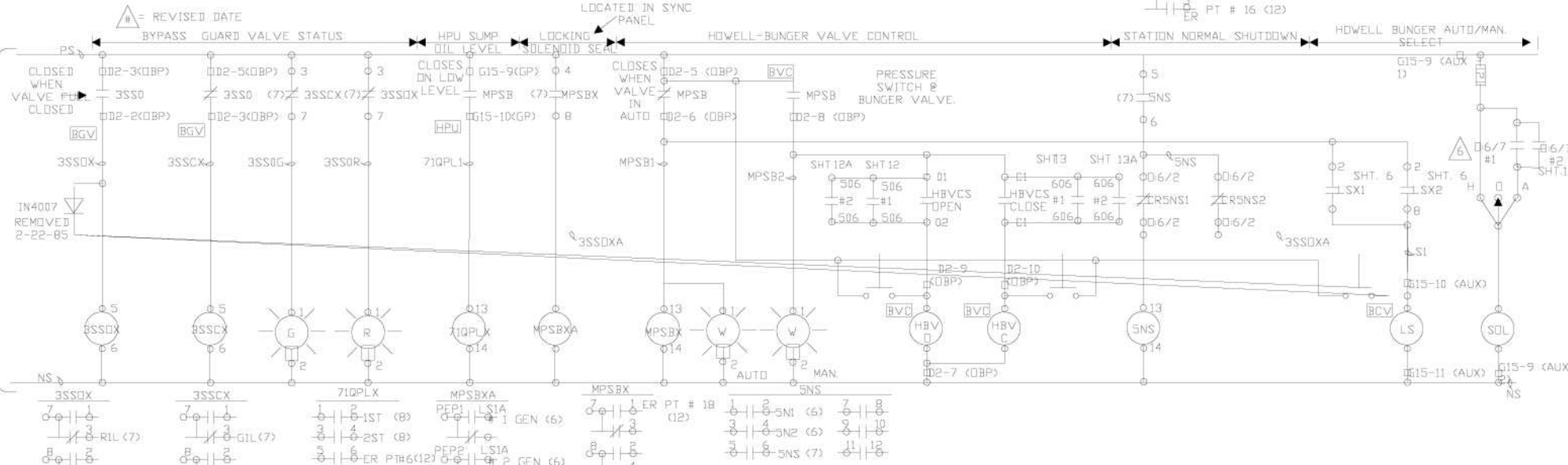
VERTIV
 ELECTRICAL RELIABILITY SERVICES
 4099 SE INTERNATIONAL WAY
 SUITE 201 PORTLAND OR 97222



LEGEND
 (XX) REFER TO DWG 820340-2 SHT. XX
 BLUE = ADDED HAND NOTES FROM ORIGINAL
 RED = CHANGES MADE
 # = REVISED DATE

NOTE
 1. UNIT # 1 PROTECTION SHOWN
 UNIT # 2 IDENTICAL
 2. SHALL SYMBOLIZE A TERMINAL BLOCK POINT AT SWITCH

GEAR

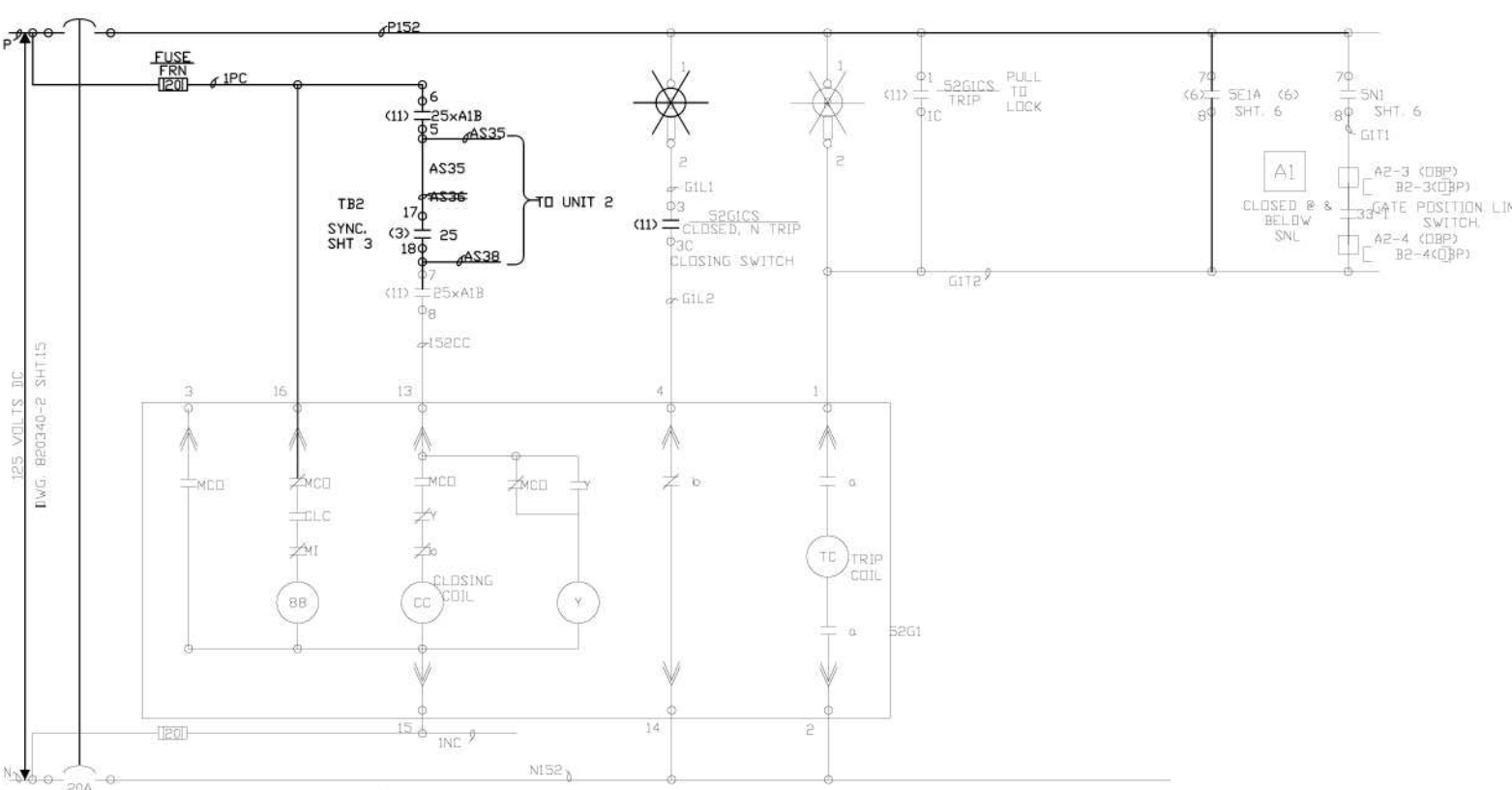


CONTINUED ABOVE

CONTINUED BELOW

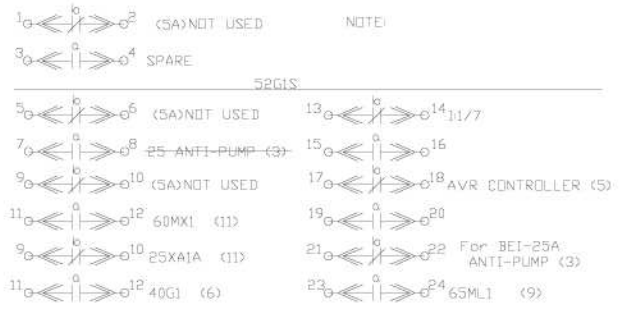
PRELIMINARY DRAWING NOT FOR CONSTRUCTION			
R.W. MATTHEWS DAM Lower West Side Road Mod River, CA	DATE	05/18/18	REV. NO.
	APPROVED BY	6/21/2018	1
SCHEMATIC DIAGRAM STATION PROTECTION	DATE	1028255	REV. NO.
	DATE	03	1

VERTIV
 ELECTRICAL RELIABILITY SERVICES
 4099 SE INTERNATIONAL WAY
 SUITE 201 PORTLAND OR 97222



- LOCATIONS OUTSIDE OF SWITCHGEAR:
- AC AC DISTRIBUTION PANEL BOARD.
 - A1 GATE OPERATOR UNIT 1, LOCATED AT GEN. GOVERNOR.
 - A2 GATE OPERATOR UNIT 2, LOCATED AT GEN. GOVERNOR.
 - BGV BYPASS GUARD VALVE
 - G1 GENERATOR UNIT 1.
 - G2 GENERATOR UNIT 2.
 - GP1 GATE POSITIONER CONTROL PANEL UNIT 1.
 - GP2 GATE POSITIONER CONTROL PANEL UNIT 2.
 - HB HOWELL BUNGER VALVE.
 - L LOCAL (MISC. LOCATIONS)
 - S SUPERVISORY CABINET.
 - SUB SUBSTATION
- LOCATIONS WITHIN SWITCHGEAR:
- AUX AUXILIARY COMPARTMENT.
 - GP GENERATOR PROTECTION COMPARTMENT.
 - 52G1 GENERATOR 1 BREAKER COMPARTMENT.
 - 52G2 GENERATOR 2 BREAKER COMPARTMENT.
 - PT POTENTIAL TRANSFORMER COMPARTMENT.
 - DBP OUTGOING BUS PROTECTION.
 - SS STATION SERVICE COMPARTMENT.

125 VOLTS, 10C
DWG. B20340-2 SHT.1.5



NOTE:
1. UNIT 1 BREAKER CONTROL SHOWN.
2. UNIT 2 IDENTICAL. SHALL SYMBOLIZE A TERMINAL BLOCK POINT IN THE SWITCH GEAR.

LEGEND:
(XX)---REFER TO DWG B20340-2 SHT. XX
(UX)---UNIT 1 OR UNIT 2
BLUE = ADDED HAND NOTES FROM ORIGINAL.
RED = CHANGES MADE.
△ = REVISED DATE

AS BUILT
DATE SEP. /1/83
LDG NO. B3013079

PRELIMINARY DRAWING NOT FOR CONSTRUCTION			
R.W. MATTHEWS DAM Lower West Side Road Mod River, CA	DATE BY	6/21/2018	NO. OF SHEETS
	APPROVED BY	M.W.	1
SCHEMATIC DIAGRAM GENERATOR PROTECTION	DATE BY	6/21/2018	NO. OF SHEETS
	APPROVED BY	CD1	1
			ELECTRICAL RELIABILITY SERVICES 4099 SE INTERNATIONAL WAY SUITE 201 PORTLAND OR 97222