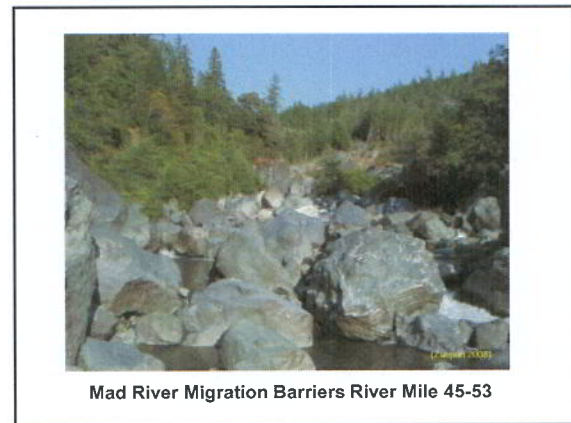
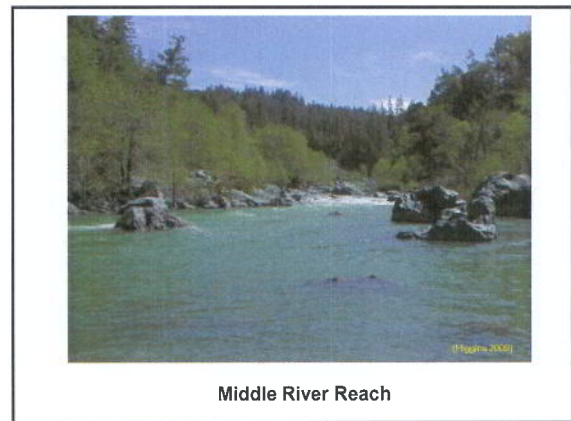
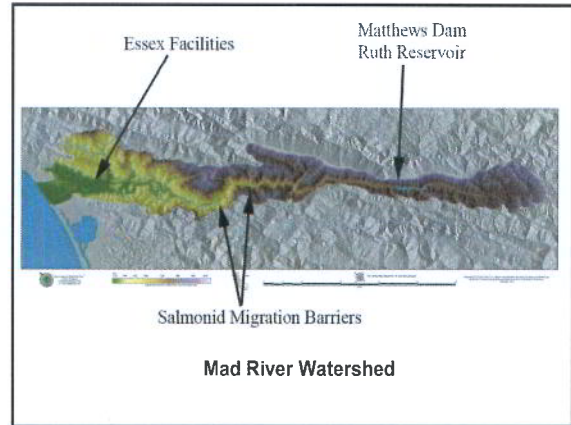
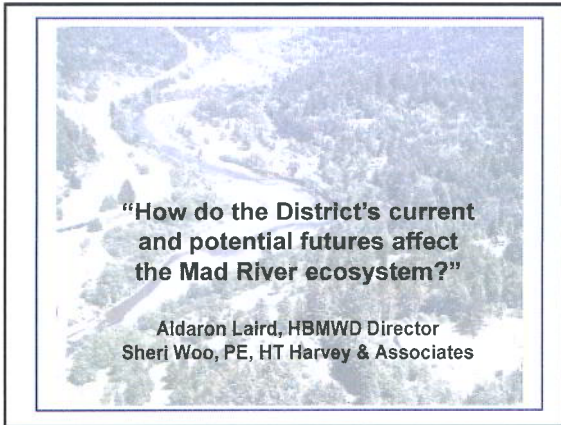


7/21/2010





Mad River below Matthews Dam

Closure of the mouth

Natural regime
Eureka-Sweasey Dam 1938-1961
HBMWD-Matthew Dam 1961-2009

Low flow discharge

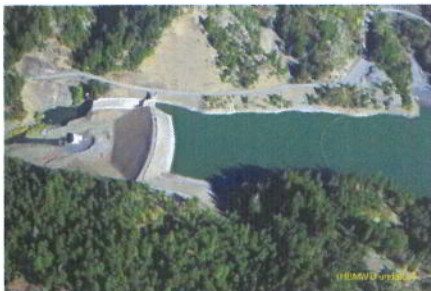
Natural regime
Eureka-Sweasey Dam 1938-1961
HBMWD-Matthew Dam 1961-2009



1870 U.S. Coast & Geodetic Survey

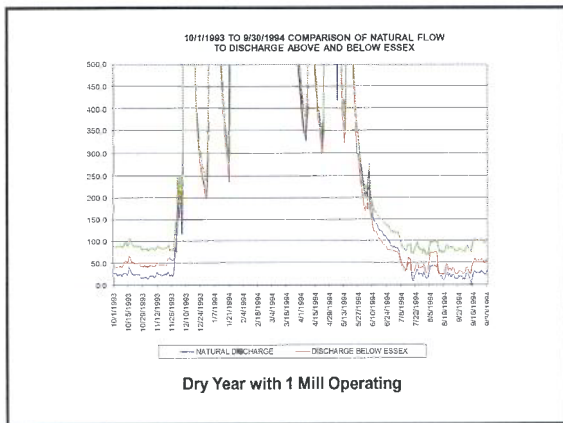
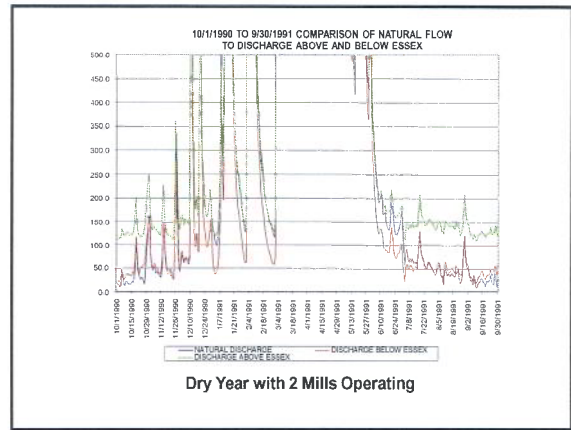
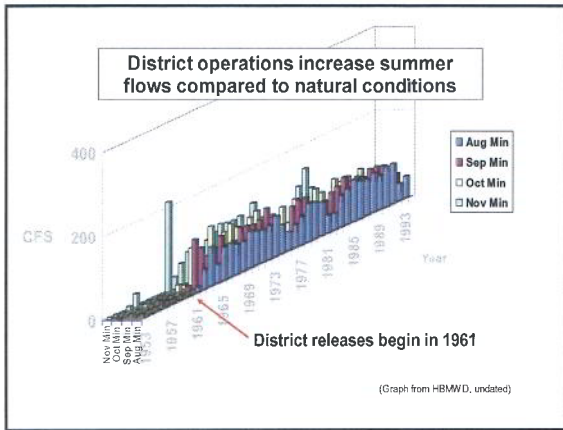


City of Eureka's Sweasey Dam 1938-1962 (operational)
1971 (removed) diversion rate of 5 cfs



Matthews Dam and Ruth Reservoir, River Mile 84

Units



Option 1. Lose it

Option 2. Use it

- Use 2A. Instream
- Use 2B. Inside District
- Use 2C. Outside District
- Use 2D. Combo

River doesn't care !!

