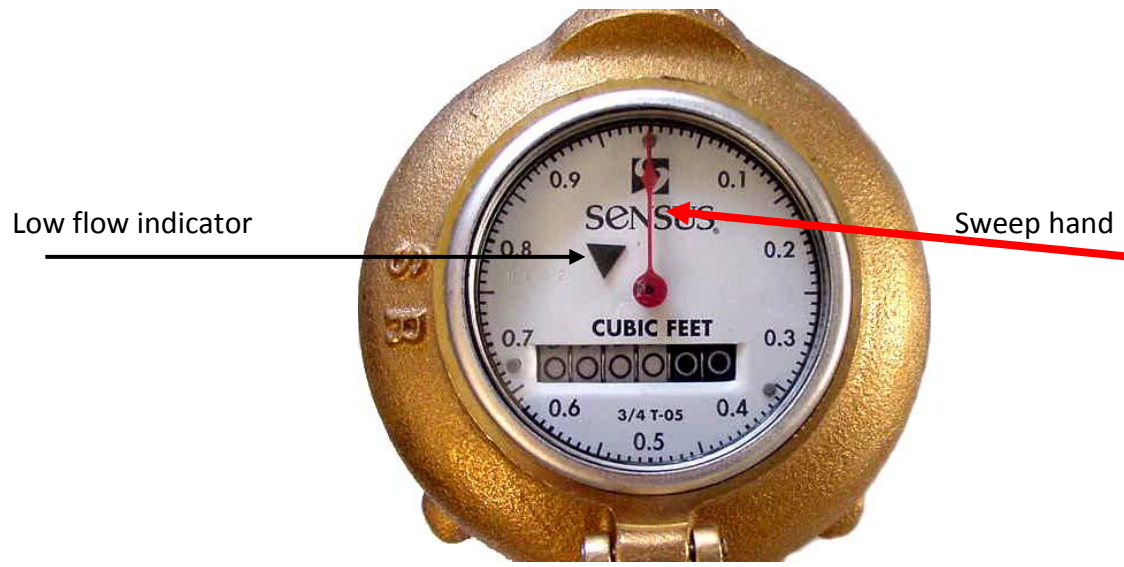


How to Read Your Meter



Reading the Display

The large sweep hand on the dial measures water use in cubic feet. One cubic foot of water passes through the water meter as the sweep hand moves from one number to the next (e.g., 0 to 1). A complete rotation equals 10 cubic feet. Most analog dials have a low-flow indicator that turns as water moves through the water meter. This typically looks like a small triangle (shown).

Leak Detection

Turn off all water in the house. Make sure the water heater is not filling, no toilets running, etc. Wait 10 minutes and then check your water meter:

1. Observe the sweep hand. If it is moving, you have a continuous leak.
2. Observe the low-flow indicator. If it is moving, you have a continuous leak.
3. Some leaks are so small that the movement is almost undetectable. To determine if you have a slow leak:
 - a. Read your water meter and record the numbers.
 - b. Wait 20 minutes then read your water meter again and record the numbers.
 - c. Subtract the first water meter reading from the second.
 - d. If Cubic feet Used is greater than zero you have a continuous leak.